

## ROLLER Series

Cable reels for industrial, commercial and domestic applications

### No. REFERENCE SERIES

**745**

**746**

**749**



### VERSIONS



**ROLLER 330 Series**  
For domestic applications



**ROLLER 330 Series**  
For industrial applications



**ROLLER 450 Series**  
With portable stand



**ROLLER-BLOCK 450 Series**  
With wheeled portable distribution assembly stand available

### REFERENCE STANDARDS

Standards: **IEC 61242**  
**IEC 61316**

### MARKING

Marking: **CE Marking**



### QUALITY MARKS



### TECHNICAL CHARACTERISTICS

Rated current: **16A-32A**  
 Rated voltage: **230÷400V~**  
 Frequency: **50Hz**  
 Insulating voltage: **500/690V~**  
 Protection degree: **IP20 – IP44 – IP55**  
 Operating temperature according to the reference standard: **-25°C+40°C**  
 Max operating temperature: **60°C**  
 Glow Wire test: **650°C/850°C**  
 Material: **Engineering plastic**  
 IK degree at 20°C: **Roller 330: IK07**  
**Roller 450: IK08**  
 Max power output: **11.000W (ROLLER 330 Series)**  
**14.000W (ROLLER 450 Series)**  
 Cable for industrial versions: **Type H07RN-F**  
**(abrasion resistant rubber)**  
 Cable for domestic versions: **Type H05VV-F (PVC)**

### PRACTICAL ADVICE

- ❖ *Do not use in places where there is a danger of explosion or fire*
- ❖ *While in use the cable should be laid out flat on the ground or the floor avoiding wear and tear or damage. If necessary protect it with a suitable protective mechanism.*
- ❖ *After use always rewind the cable carefully onto the reel.*
- ❖ *Regularly check the cable for any signs of wear, compression or abrasion. Electrical conductivity of all wires and especially the ground conductor should be tested.*

## ROLLER Series

Cable reels for industrial, commercial and domestic applications

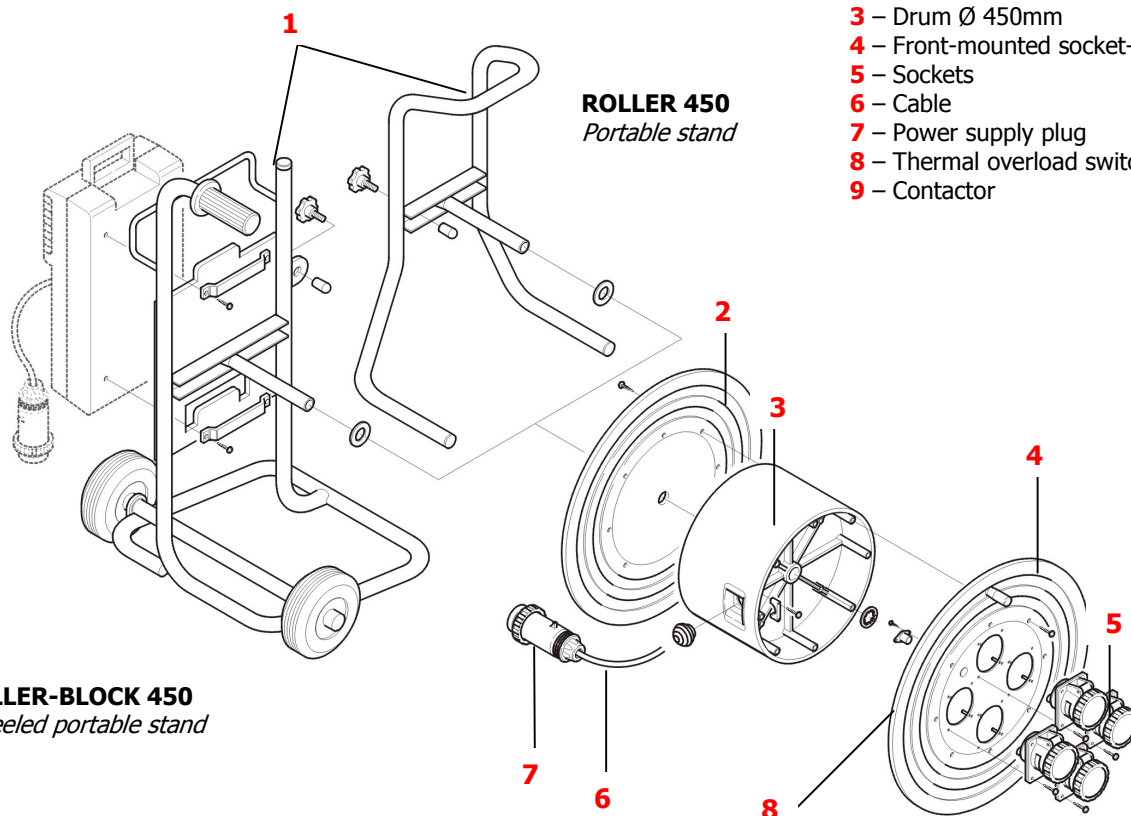
### No. REFERENCE SERIES

**745**  
**746**  
**749**



### BEHAVIOUR WITH CHEMICAL AND ATMOSPHERIC AGENTS

Saline solution	Acids		Bases		Solvents				Mineral oil	UV rays
	Concentrated	Diluted	Concentrated	Diluted	Hexane	Benzol	Acetone	Alcohol		
<b>RESISTANT</b>	<b>NOT RESISTANT</b>	<b>NOT RESISTANT</b>	<b>LIMITED RESISTANCE</b>	<b>RESISTANT</b>	<b>NOT RESISTANT</b>	<b>NOT RESISTANT</b>	<b>NOT RESISTANT</b>	<b>LIMITED RESISTANCE</b>	<b>NOT RESISTANT</b>	<b>RESISTANT</b>



- 1** – Portable cable reel stand and wheeled stand for distribution assemblies
- 2** – Rear-mounted disc
- 3** – Drum Ø 450mm
- 4** – Front-mounted socket-holder discs
- 5** – Sockets
- 6** – Cable
- 7** – Power supply plug
- 8** – Thermal overload switch
- 9** – Contactor